

Embellishments

Bach distinguished between eight basic types of ornamentation in part I, chapter 2 of the *Versuch*:

1. Appoggiatura [Vorschlag] see *Versuch* I:2.2, §1–26.



2. Trill [Triller] see *Versuch* I:2.3, §1–21.



- a. Trill from below [Triller von unten] see *Versuch* I:2.3, §22.



- b. Trill from above [Triller von oben] see *Versuch* I:2.3, §27.



- c. Short trill [Halber oder Prall-Triller] see *Versuch* I:2.3, §30–36.



3. Turn [Doppelschlag] see *Versuch* I:2.4, §1–26.



a. Trilled turn [prallender Doppelschlag] see *Versuch I:2.4*, §27–36.



b. Snapped turn [geschnellter Doppelschlag] see *Versuch I:2.4*, §33–36.



c. Turn from below [Doppelschlag von unten] see *Versuch I:2.4*, §37.



4. Mordent
Versuch I:2.5, §1–15.

a. Short

b. Long



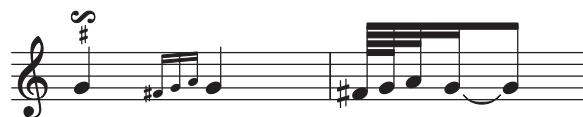
5. Compound appoggiatura [Anschlag or Doppelvorschlag] see *Versuch I:2.6*, §1–11.



6. Slide [Schleiffer] see *Versuch I:2.7*, §1–13.



Inverted turn [Schleiffer von dreyen Nötgen] see *Versuch* I:2.7, §5.



7. Snap [Schneller] (also called inverted mordent) see *Versuch* I:2.8, §1–4.



8. Elaboration of fermate (or cadences) [Verzierungen der Fermaten] see *Versuch* I:2.9, §1–6.